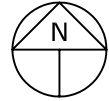








LAUNCHING OPTIONS FOR THE FIDALGO BAY INDUSTRIAL DISTRICT

SOURCE: SKAGIT CO. GIS & NOAA



- | | |
|---|---|
|  RELEVANT CITY, PORT, DNR LAND |  <1 FATHOM AT MEAN LOW |
|  F.B. IND. DIST. NON-MJB LAND |  1-1.5 FATHOMS AT MEAN LOW |
|  F.B. IND. DIST. MJB LAND |  >1.5 FATHOMS AT MEAN LOW |

 2.3-MILE CRAWL OF NEW 150' YACHT IN 2005

- | | |
|--|--------------------------|
| Ⓓ DRYDOCK: 400' MAX | Ⓓ 55T TRAVELIFT: 65' MAX |
| Ⓔ SYNCROLIFT: 350' MAX | Ⓓ ABANDONED DOCK SITE |
| Ⓔ RAMP: 65' MAX SEALIFT; 85' MAX BUNKS (LAUNCH ONLY) | |

GUEMES CHANNEL

CAP SANTE

DREDGED CHANNEL

FIDALGO BAY

ANA. MAR.

FID. MAR.